

SIPS-BDA™

Patents No. 9,711,868, 9,905,933, 10,109,927 and Patents Pending

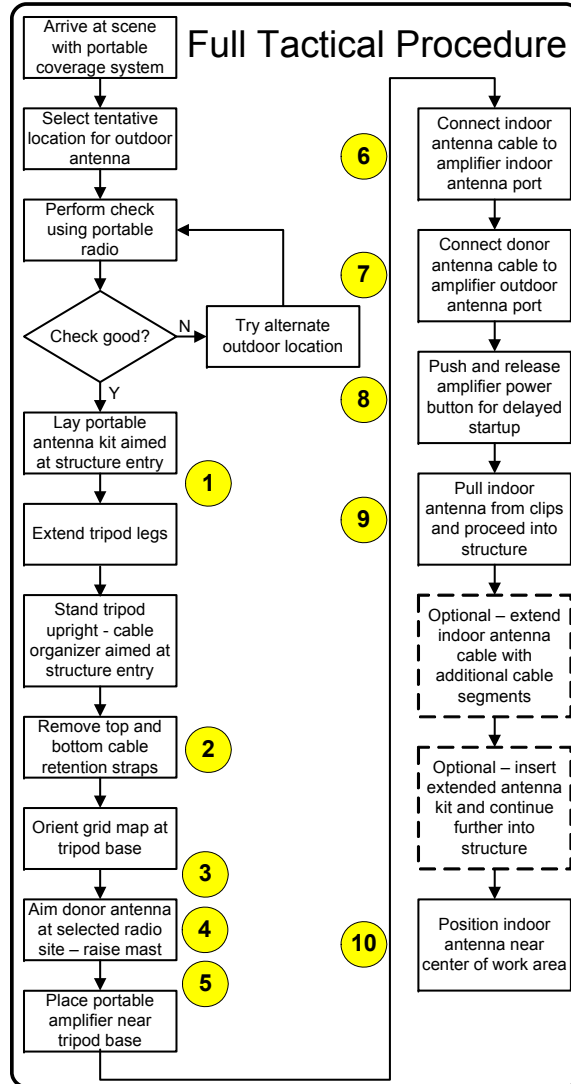


Seamless trunked radio communications in buildings, tunnels, and other dead zones.

- Tactical BDA
- 2-minute setup
- Full coverage
- Interoperable

"It's simple, affordable, and it works"

Setup is straight-forward and fast. Just follow the numbers displayed on the equipment.



Minimal Knowledge, Skills and Abilities required.
2-hour basic operator's course included.

Find the Operator's Manual at
www.inbuildingcommunications.com
Tactical Products

SIPS-BDA™ Accessories



FAK Flexible Antenna Kit

ACR Auxiliary Cable Reel



CPSK Cordless Power Supply Kit

SIPS-BDA™

SPECIFICATIONS

SAK Standard Antenna Kit

Case	
Type	Heavy duty padded nylon bag, dual zippered, dual hand straps
Length (in)	60
Height (in)	16
Depth (in)	12
Total loaded weight (lb)	50
Stand	
Type	Heavy duty tripod stand
Stand height (in)	Adjustable 44 to 120
Stand base spread (in)	Adjustable 38 to 58
Weight (lb)	17
Color	Black
Transport	In case # 1
Mount	Free standing on level surface

Directional Yagi Outdoor Antenna	
Frequency (MHz)	746-896
Gain (dBi)	11
Number of Elements	8
Front to Back Ratio (dB)	18
3dB Beamwidth E-Plane (deg)	42
3dB Beamwidth H-Plane (deg)	48
Power Handling (W)	100
Element Type	Aluminum Rod
Length (in)	33
Element Height (in)	6 to 8
Weight (lb)	1.8
Transport	with stand within case # 1
Mount	Ball & socket connect to stand
Standard cable length (ft)	12
Cable attenuation (dB @ 800MHz)	0.45
Omnidirectional Indoor Antenna	
Frequency (MHz)	746-896
Gain (dBi)	3
VSWR	1.8:1
Bandwidth (1.5:1, MHz)	123
Power Handling (W)	50
Enclosure	Rubber
Height (in)	27
Weight (lb)	1.5
Transport	with stand within case # 1
Mount	hook or stand
Standard cable length (ft)	100 w/cable organizer
Cable attenuation (dB @ 800MHz)	4.5

General

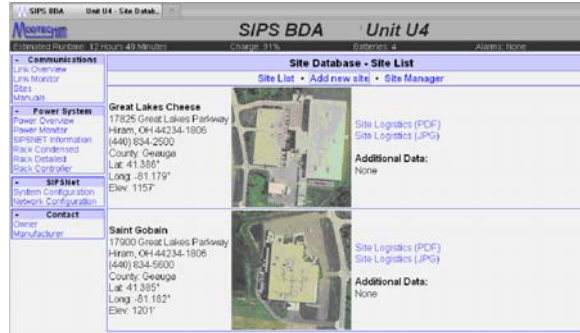
Environmental	
Operating temp range (C)	-20 to 50
Humidity	90% rel. noncondensing
Altitude (m)	3000
Battery run time e (hr)	12 (expandable to 24)
System setup time (min)	<4

TAK Tactical Amplifier Kit

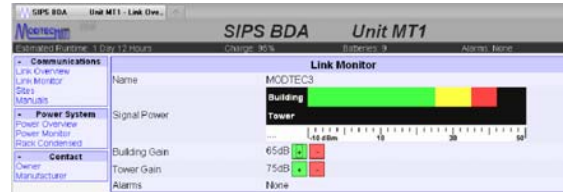
Case	
Type	Heavy duty injection molded polypropylene
Standard Format (in)	25 x 20 x 12
Small Format (SF) (in)	22 x 14 x 9
Standard Format (lb)	50
Small Format (SF) (lb)	35
Other	Roller blade style wheels with retractable handle
Power	
Type	Standalone or UPS mode
AC Input	
Type	ACI-100 modular / hot-swappable
Voltage (VAC)	90 to 264
Frequency	47 to 63 Hz
Input power (VA)	120
Backup / Standalone Battery	
Type	EM-100 modular / hot-swappable
Chemistry	Lithium-Ion
Battery run time (hr)	6 or 12 (perpetual with hot swap)
Charging	In place with AC input Optional DC input
Bi-directional Amplifier	
Frequency (MHz)	806 to 824 & 851 to 869 788 to 805 & 758-775
Gain (dB)	80
Linear Output Power (dBm)	27
Propagation delay (usec)	<5
Noise figure (dB)	<6
Gain control	AGC + MANUAL
Overload protection	Shutdown with auto-recovery
Transport / mount	Integral with case # 2

SIPSNET™

Use any PC, tablet, smartphone, or other platform with any web browser.



SITES - browse location, radio system, and other dispatch information on SIPS-BDA.



LINK MONITOR - browse uplink and downlink signal level, control manual gains, and monitor alarms.



POWER MONITOR - remaining runtime and exact power status at your fingertips.

Fully automatic charging from AC line, generator, vehicle, or alternative power source.



Just plug in and forget it. It's ready when needed.

Advanced **Li-ion EM-100™** battery modules.



- Easy fuse
- Fuel gauge
- Easy pull ring
- Voltage control
- Current control
- Temperature control
- Dynamic cell balancing
- TCO protection
- Smart interface
- Lightweight (1.6 lb)
- Air shippable per DOT
- Storage life optimizer
- Internet manageable
- Quick disconnect (no tools)

Special event rental

Wireless video

Wind, solar, fuel cell

Li-ion batteries

Engineering

www.modtech-corp.com

sips@modtech-corp.com

(440) 942-2133



7136 Eagle Rd
Willoughby, OH 44094
Tel: (440) 942-2133
sips@modtech-corp.com